

SECURITON Aspirating Smoke Detection Technical Catalogue

Version 2.0 2019



Aspirating Smoke Detector (including SSD 31)

SEC-ASD-531 1 Sampling pipe / Detector

The SecuriRAS SEC-ASD-531 aspirating smoke detector is designed for smaller monitoring areas and for the easiest possible handling.

The SEC-ASD-531 is equipped with a highly sensitive smoke sensor SSD 31 using a single sampling pipe network. The housing provides the option for two expansion modules. Commissioning and configuration is done directly on the device without any software tool. For planning the ASD PipeFlow software allows an optimized design of any installation.

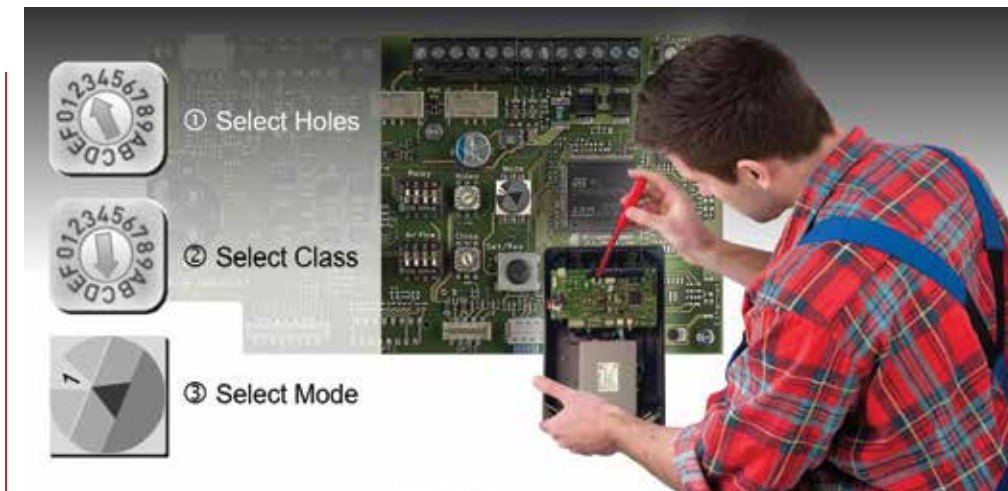
Technical data

Mains voltage:	14 to 30 V DC
Ambient temperature:	-10 °C to + 55 °C
Protection class:	IP 54
Dimensions (H x W x D):	195 x 290 x 140 mm
Case cover material:	ABS-Blend, UL 94-V0
Case Colour:	Grey
Weight:	1,95 kg
Standards:	AS 7240.20
Maximum sampling pipe length:	75 metres
Monitoring area:	720 m ²
Application:	Single IT racks, small tele-communications containers, elevator shafts, clean rooms, false ceilings etc.



SEC-ASD-531	AS 7240.20		
	Class A	Class B	Class C
Max. overall length of the sampling pipe tube network	75 m	75 m	75 m
Max. length from ASD to farthest sampling hole	40 m	40 m	40 m
Max. number of sampling holes	6	8	12

Simple 3 Step Set Up



Main Units		ASD 531	ASD 532	ASD 535-1	ASD 535-2	ASD 535-3	ASD 535-4
Channels / Sensors	[Nbr]	1	1	1	2		
Sensitivity	[%Obs./m]	0.006	0.002	0.002	0.002		
Sampling Points	[A/B/C]	6/8/12	8/12/16	18/56/120	36/112/240		
Aggr. Tube Length	[m]	75	120	300	600		
Max. Area	[m ²]	720	1'280	2'880	5'760		

Aspirating Smoke Detector

SEC-ASD-532 1 Sampling pipe / Detector,
1 Smoke level display



The SecuriRAS SEC-ASD-532 aspirating smoke detector is designed for small to midsize monitoring areas.

The SEC-ASD-532 base unit is provided for a highly sensitive smoke sensor SSD 532 (to be ordered separately) for a single sampling pipe network. The measured smoke level is indicated on a bar graph display.

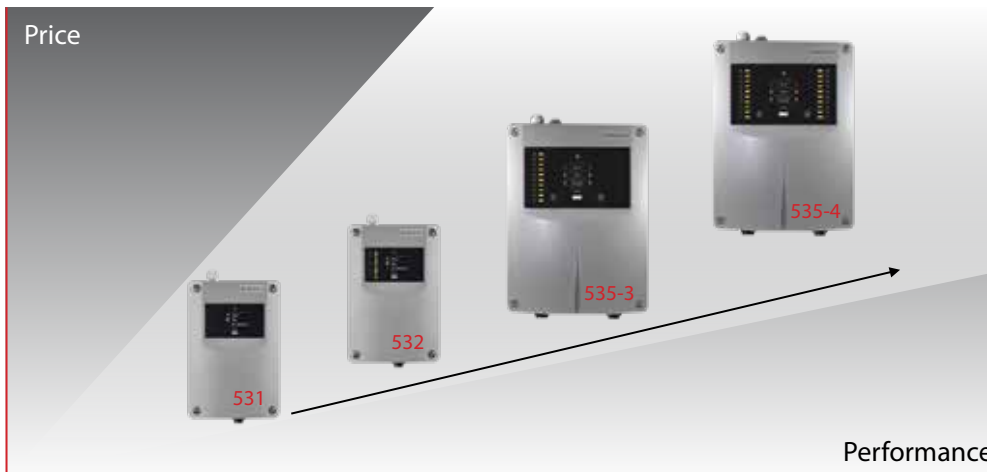
The housing provides the option for two expansion modules. Commissioning and configuration is done either directly on the device or via the ASD Config software tool. For planning the ASD PipeFlow software allows an optimized design of any installation.

Technical data

Mains voltage:	14 to 30 V DC
Ambient temperature:	-20 °C to + 60 °C
Protection class:	IP 54
Dimensions (H x W x D):	195 x 290 x 140 mm
Case cover material:	ABS-Blend, UL 94-V0
Case Colour:	Grey
Weight:	1,7 kg
Standards:	AS 7240.20
Maximum sampling pipe length:	120 metres
Monitoring area:	1280 m ²
Application:	Elevator shafts, prison cells, clean rooms, laboratories, IT racks, tele-communications, facilities etc.

SEC-ASD-532	AS 7240.20		
	Class A	Class B	Class C
Max. overall length of the sampling pipe tube network	120 m	120 m	120 m
Max. length from ASD to farthest sampling hole	70 m	70 m	70 m
Max. number of sampling holes	8	12	16

Covers all Price Points



Extremely Silent





SEC-ASD-535-1



SEC-ASD-535-2



SEC-ASD-535-3



SEC-ASD-535-4

Aspirating Smoke Detector

- SEC-ASD-535-1 1 Sampling pipe / No Display / 1 Zone
- SEC-ASD-535-2 2 Sampling pipes / No Display / 2 Zones
- SEC-ASD-535-3 1 Sampling pipe / Display / 1 Zone
- SEC-ASD-535-4 2 Sampling pipes / Display / 2 Zones

The SecuriRAS SEC-ASD-535 aspirating smoke detector is designed for universal applications mainly for midsize to large monitoring areas. The SEC-ASD-535 base units provide space for 1 or 2 highly sensitive smoke sensors SEC-SSD-535 (to be ordered separately) for 1 or 2 sampling pipe networks. The measured smoke level can be indicated on a bar graph display (models -3 and -4). The housing provides the option for four expansion modules. Commissioning and configuration is done either directly on the device or via the ASD Config software tool. For planning the ASD PipeFlow software allows an optimized design of any installation.

Technical data

Mains voltage:	10.5 to 30V DC
Ambient temperature:	-30 °C to + 60 °C
Protection class:	IP 54
Dimensions (H x W x D):	397 x 265 x 148 mm
Case cover material:	ABS-Blend, UL 94-V0
Case Colour:	Grey
Weight:	3,85 kg
Standards:	AS 7240.20
VdS-Approval:	G 208154
Noise level:	32 dBA: extremely low noise levels
Maximum sampling pipe length:	2 x 300 metres
Monitoring area:	5760 m ²
Application:	High-bay and deep-freeze warehouse, large data centres, historic buildings, large/high halls etc.

SEC-ASD-535	AS 7240.20		
	Class A	Class B	Class C
Max. overall length of the sampling pipe tube network	300 m	300 m	300 m
Max. length from ASD to farthest sampling hole	100 m	110 m	110 m
Max. number of sampling holes	18	56	120
Max. number of sampling holes per sampling branch	18	50	50



Options & Expansions



		CARDS			
	SIM 35	RS485 Network	n/a	optional	optional
	MCM 35	Memory Card	included	included	optional
	RIM 36	Relay I/F Module	optional	optional	optional (RIM 35)



Smoke Sensor for SEC-ASD-531

SEC-SSD-31

Alarm Sensitivity range 0.02 – 10% /m
 The smoke sensor SSD 31 is pre-installed in the SEC-ASD-531 and is also available also as replacement part. 3 Pre-signals are set on a fixed percentage of the alarm threshold (30/50/70%).

Technical data

Sensitivity alarm:	0.02 %/m – 10 %/m
Sensitivity range pre-signals:	0.006 %/m – 7 %/m
Ambient temperature:	-10 °C to + 55 °C
Dimensions (H x W x D):	120 x 116 x 95 mm



Smoke Sensor for SEC-ASD-532

SEC-SSD-535-3

Alarm Sensitivity range 0.02 – 10% /m
 The smoke sensor SSD 532 has to be ordered separately for the SEC-ASD-532.
 3 Pre-signals can be set between 10 and 90% of the alarm threshold.

Technical data

Sensitivity alarm:	0.02 %/m – 10 %/m
Sensitivity range pre-signals:	0.002 %/m – 9 %/m
Ambient temperature:	-20 °C to + 60 °C
Dimensions (H x W x D):	120 x 116 x 95 mm



Smoke Sensor for SEC-ASD-535

SEC-SSD-535-3

Alarm Sensitivity range 0.02 – 10% /m
 The smoke sensor SSD 535 has to be ordered separately for the SEC-ASD-535.
 Pre-signals can be set between 10 and 90% of the alarm threshold.

Technical data

Sensitivity alarm:	0.02 %/m – 10 %/m
Sensitivity range pre-signals:	0.002 %/m – 9 %/m
Ambient temperature:	-30 °C to + 60 °C
Dimensions (H x W x D):	120 x 136 x 95 mm



Fastener plate to cover a smoke sensor chamber

SEC-ASD-535 Verschl

The fastener plate is for closing the 2nd channel when it is temporarily not used. (e.g. Conversion of a room)
 The packaging unit of the fastener plate is 50 pieces.

PVC FITTINGS



Compressed-air connection

SEC-CC-25-PVC

Compressed-air connection for tube
 TU 25 PVC for cleaning the aspirating tube.

Technical data

Material:	PVC
Colour:	grey
Diameter:	25 mm



Ventilation duct flange

SEC-DF-25-PVC

Flange for tube TU 25 PVC for the monitoring of ventilation ducts. Per duct 3 pieces of DF 25 PVC are required, 2 for the aspirating stub, 1 for the air recirculation.

Technical data

Material:	PVC
Colour:	grey
Diameter:	25 mm



Relay I/F module for SEC-ASD-535

SEC-RIM-35 5 relays with changeover contacts
 The RIM 35 brings five (5) additional relay outputs to your SEC-ASD-535. Expansion limit is two (2) RIM 35 / 10 relays. Each relay can be assigned to any ASD event by programming with the ASD Config software. The module comes with mounting brackets, screws and ribbon cable.

Technical data

Max. relay output load:	50 / 1 / 30 V DC/A/W
Dimensions (H x W x D):	95x58x17 mm
Weight:	85 g



Relay I/F module for SEC-ASD-531 and SEC-ASD-532

SEC-RIM-36
 The RIM 36 brings five (5) additional relay outputs to your Special Fire Detector (except SEC-ASD-535). Expansion limit is two (2) RIM 35 / 10 relays. Each relay can be assigned to any ASD event by programming with the SEC-ASD Config software. The module comes with mounting brackets, screws and ribbon cable.

Technical data

Max. relay output load:	50 / 1 / 30 V DC/A/W
Dimensions (H x W x D):	95x58x17 mm
Weight:	85 g



Memory card module for SEC-ASD-535

SEC-MCM-35
 This Memory Card Module lets you trace up to 16 Million events and stores analogue values like smoke concentration and airflow of at least 83 days depending on the log interval. The module comes with mounting brackets, screws and ribbon cables and SD-Industrial memory card.

Technical data

Dimensions (H x W x D) :	95x58x17 mm
Weight:	43 g



SD-Card Industrial 2GB

SEC-SD-Industrial
 SD memory card (industrial) 2GB to use with MCM 35 or directly on-board in SEC-ASD-531 (AMB 31) and SEC-ASD-532 (AMB 32).

Technical data

Memory:	2 GB
Temperature range:	- 40°C - + 85°C



Serial I/F Module networking for SEC-ASD-532 and SEC-ASD-535

SEC-SIM-35
 For the RS 485 networking of up to 250 Special Fire Detectors like SEC-ASD-535 or SEC-ASD-532. Using the "ASD Config" configuration software, all SEC-ASDs in the network can be visualised and configured from a PC. The module comes with mounting brackets, screws and ribbon cables.

Technical data

Dimensions (H x W x D) :	95x58x17 mm
Weight:	56 g



Serial Master Module for networking

SEC-SMM-535
 This interface connects the RS485 (over SIM 35) networked SEC-ASDs to a USB port of a PC. It is powered by the USB port.

Technical data

Power Supply:	USB powered / 5 VDC
Operating temperature:	-30°C to +60°C
Dimensions (H x W x D):	82x89x55 mm
Weight:	165 g

SEC-ASD planning and calculation software

SEC-ASD-PipeFlow

Planning and calculation software for planning symmetric and asymmetric sampling pipe topologies.
(Subject to licence)

Technical data (requirements)

Operating voltage:	Windows XP / 7 / 8.1
RAM:	1 GB
Hard disc space required:	50 MB



SEC-ASD configuration tool license with USB Dongle

SEC-D&PL_ASD-Conf_N Dongle & Partner License ASD Config Networking



SEC-ASD configuration tool license with USB Dongle

SEC-D&PL_ASD-Conf Dongle & Partner License ASD Config



USB 2.0 cable for connection between SEC-ASD-535 and PC

SEC-KAB-USB-45

USB 2.0 cable for connection between SEC-ASD-535 and PC for commissioning and maintenance via ASD Config

Technical data

Length:	4.5m
Type:	A-B

SAMPLING POINTS



Sampling hole clip

- SEC-CLIP X.X PA
- SEC-CLIP 2.0 PA
- SEC-CLIP 2.5 PA
- SEC-CLIP 3.0 PA
- SEC-CLIP 3.5 PA
- SEC-CLIP 4.0 PA
- SEC-CLIP 4.5 PA
- SEC-CLIP 5.0 PA
- SEC-CLIP 5.5 PA
- SEC-CLIP 6.0 PA
- SEC-CLIP 6.5 PA
- SEC-CLIP 7.0 PA

Technical data

Hole Diameter:	Type
2.0 mm	SEC-CLIP 2.0 PA
2.5 mm	SEC-CLIP 2.5 PA
3.0 mm	SEC-CLIP 3.0 PA
3.5 mm	SEC-CLIP 3.5 PA
4.0 mm	SEC-CLIP 4.0 PA
4.5 mm	SEC-CLIP 4.5 PA
5.0 mm	SEC-CLIP 5.0 PA
5.5 mm	SEC-CLIP 5.5 PA
6.0 mm	SEC-CLIP 6.0 PA
6.5 mm	SEC-CLIP 6.5 PA
7.0 mm	SEC-CLIP 7.0 PA

Sampling hole on aspirating pipe (clip).

Available with different diameter according to the project data.

Only for PVC and ABS pipes with 25 mm diameter. Packaging unit: 10 pieces



Maintenance clip

SEC-Clip-REV PA

Clip without hole for revision purpose.
Packaging unit: 10 pieces

Technical data

Material:	PA
Pipe connection diameter:	25 mm



Sampling point with heating

- SEC-HEAT-3.0-PVC red
- SEC-HEAT-3.5-PVC blue
- SEC-HEAT-4.0-PVC green
- SEC-HEAT-4.5-PVC black
- SEC-HEAT-5.0-PVC brown

To install the aspirating pipe in deep-freeze rooms to prevent the freezing of the aspirating holes. HEAT X.X is the relevant diameter for SEC-ASD PipeFlow-calculations (3.0/3.5/4.0/4.5/5.0mm)

Technical data

Pipe connection diameter:	25 mm
Hole Diameter:	Type
5,7 mm	HEAT 3.0 ABS
6,1 mm	HEAT 3.5 ABS
6,3 mm	HEAT 4.0 ABS
6,7 mm	HEAT 4.5 ABS
7,1 mm	HEAT 5.0 ABS



Sampling point with heating

- SEC-HEAT-3.0-ABS red
- SEC-HEAT-3.5-ABS blue
- SEC-HEAT-4.0-ABS green
- SEC-HEAT-4.5-ABS black
- SEC-HEAT-5.0-ABS brown

Same as HEAT X.X PVC but in ABS.

Technical data

Pipe connection diameter:	25 mm
Hole Diameter:	Type
5,7 mm	HEAT 3.0 ABS
6,1 mm	HEAT 3.5 ABS
6,3 mm	HEAT 4.0 ABS
6,7 mm	HEAT 4.5 ABS
7,1 mm	HEAT 5.0 ABS



Heat Resistor

SEC-Heat-Resistor

Replacement for the sampling point with heating HEAT X.X PVC/ABS.

Technical data

Resistor:	220 Ω
-----------	-------



Cable connection fitting

- SEC-CCF-25-PVC
- SEC-CCF-25-ABS

Cable connection fitting set for T-junctions of the tubes in deep-freeze rooms.

Technical data

Pipe connection diameter:	25 mm
---------------------------	-------



Silicon litz wire

- SEC-SLW-0.5-wt (white)
- SEC-SLW-0.5-bk (black)

Silicon litz wire 0.5mm² to connect the heating resistors in the heating nozzles HEAT X.X PVC/ABS. Order quantity must be a multiple of 100.

Technical data

Length:	1 m
Packaging unit:	100 pieces



Wiring connection unit

SEC-WCU-535

For the introduction of the supply of the sampling point with heating into the aspirating tube, with internal clamps. For more details please see the guidelines for deep freeze-warehouses.

Technical data

Dimensions (H x W x D):	80 x 82 x 85 mm
Material:	PC
Pipe connection diameter:	25 mm
Weight:	317g

NOTE: A full range of ASD pipes and fitting are available.



Manual ball valve

SEC-MV-25-PVC
SEC-MV-25-ABS
 Manual ball valve for revision and cleaning works with compressed air.

Technical data	
Material:	PVC
Pipe connection diameter:	25 mm



Detector Box

SEC-REK 511
 For the localization of a fire in a separate room, when a single SEC-ASD is monitoring several rooms. To use together with the SSD 515-Xs smoke detector. Has to be installed in every stub, which leads to a single room from the main tube.

Technical data	
Operating voltage:	18 to 28 VDC
Ambient temperature:	0 °C to + 50 °C
Dimensions (H x W x D):	186 x 122 x 85 mm



Scattered light smoke detector for SEC-REK 511

SEC-SSD-515-1S sensitivity 1.2%/m
SEC-SSD-515-2S sensitivity 0.6%/m
SEC-SSD-515-3S sensitivity 0.3%/m

Technical data	
Operating voltage:	18 to 28 VDC
Ambient temperature:	-20 °C to + 60 °C
Protection class:	IP 44
Case colour:	white
Dimensions (D x H):	80 x 56 mm

The SSD 515-xS (Scattered Light Smoke Detector) is the smoke sensor for the accessory device SEC-REK 511 (full addressing) for the Aspirating Smoke Detector of the SEC-ASD and RAS product family. The SSD 515-xS operates according to the scattered light principle and is designed so that it optimally meets the specific requirements of smoke detection in association with an Aspirating Smoke Detector. The detector has alarm threshold tracking and is additionally available with various sensitivities. By choosing the appropriate detector sensitivity, application-specific detection properties of the Aspirating Smoke Detector are possible.



Filter box small

SEC-FBS-25-PC
 Filter box small including filter-mat.
 Inserted into the sampling pipe before SEC-ASD. To be used in slightly dusty rooms.

Technical data	
Dimensions (H x W x D):	80 x 82 x 85 mm
Material:	PC
Pipe connection diameter:	25 mm



Filter mat small for filter box small

EC-FBS-25-PC-EFM-5er
 Filter-mat for filter box small.
 Packaging of 5 pieces

Technical data	
Dimensions (H x W x D):	80 x 80 x 20 mm



Filter box large

SEC-FBL-25-PC
 Filter box large including filter-mat.
 Inserted into the sampling pipe before SEC-ASD. To be used in dusty rooms

Technical data	
Dimensions (H x W x D):	120 x 122 x 85 mm
Material:	PC
Pipe connection diameter:	25 mm



Filter mat large for filter box large

SEC-FBL-25-PC-EFM-5er
 Replacement filter mat for the filter box large.
 Packaging of 5 pieces

Technical data	
Dimensions (H x W x D):	117 x 80 x 80 mm



Water retaining box

SEC-WRB-25-PVC

SEC-WRB-25-ABS

Water retaining box standard

Used in rooms with high humidity.

Inserted into the sampling pipe before

DTB 25 PC (when used), any types of dust filters

(when used) and SEC-ASD.

Technical data

Dimensions (H x W x D):	335 x 250 x 90 mm
Material:	PC
Pipe connection diameter:	25 mm



Air cooler and water separator

SEC-LK-35-PVC

SEC-LK-35-ABS

Is used as an air cooler when the sampling pipe

is in a room >60°C. Can also be used as a water

separator in rooms with high amount of air

humidity and / or condensing water because of

temperature differences.

For more details see the technical documentation.

Technical data

Dimensions (H x W x D):	1000 x 730 x 80 mm
Material:	Copper pipe d=22x1 mm
Weight:	8 kg
VdS-Approval:	G208154
CPD-Approval:	0768-CPD-20600



Detonation flame arrester

SEC-DFA-25-3

Detonation flame arrester for explosion zones.

Equipment category IIC. 2 pieces are needed

per sampling tube. For more details see the

technical documentation.

Technical data

Pipe connection diameter:	25 mm
---------------------------	-------



Detonation flame arrester

SEC-DFA-25-2

Same as DFA 25-3 but equipment category IIB.

Technical data

Pipe connection diameter:	25 mm
---------------------------	-------



Detonation flame arrester

SEC-DFA-25-1

Same as DFA 25-3 but equipment category IIA.

Technical data

Pipe connection diameter:	25 mm
---------------------------	-------

Noise reduction housing

SEC-Insulation-housing

The noise insulation housing is used as an accessory part for the aspirating smoke detector ASD 535 in areas where a low level of noise is required. If the ventilator noise from the aspirating smoke detector is found to be disruptive and changing the location of the evaluation unit is not possible, the aspirating smoke detector can be integrated into a noise insulation housing.

Technical data

Sound Pressure level:	20 dB (A)
Dimensions (H x W x D):	500 x 500 x 300 mm
Material:	Steel sheet
Weight:	21.5kg
Protection Class:	IP 54



Additional housing for SecuriRAS SEC-ASD-535

SEC-ASD-Housing-Ex

The additional housing is designed for the integration of an aspirating smoke detector SEC-ASD-535. The additional housing should be used as additional personal protection in explosive areas. If there is danger of operations related damage (e.g. lift truck operations) to the aspirating smoke detector, the additional housing can serve as a mechanical protection measure.

Technical data

Dimensions (H x W x D):	500 x 500 x 300 mm
Material:	Steel sheet
Weight:	21kg
Protection Class:	IP 54





Main board for SEC-ASD-531

SEC-AMB-31

Repair exchange for the SEC-ASD-531

Technical data

Dimensions (H x W x D): 250 x 160 x 15 mm



Main board for SEC-ASD-532

SEC-AMB-32

Repair exchange for the SEC-ASD-532

Technical data

Dimensions (H x W x D): 250 x 160 x 15 mm



Main board for SEC-ASD-535-1 and -3

SEC-AMB-35-1

Repair exchange for the SEC-ASD-535-1 and -3

Technical data

Dimensions (H x W x D): 125 x 176 x 20 mm



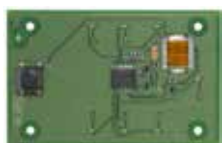
Main board for SEC-ASD-535-2 and -4

SEC-AMB-35-2

Repair exchange for the SEC-ASD-535-2 and -4

Technical data

Dimensions (H x W x D): 125 x 176 x 20 mm



Basic control board for standard display of SEC-ASD-535-1 and -2

SEC-BCB-35

Repair exchange for the standard display unit (without smoke level display)

Technical data

Dimensions (H x W x D): 90 x 59 x 9 mm



Basic control board for advanced display of SEC-ASD-535-3 and -4

SEC-ACB-35

Repair exchange for the advance display unit (with smoke level display)

Technical data

Dimensions (H x W x D): 90 x 142 x 9 mm



Air flow sensor for SEC-ASD-531 and SEC-ASD-532

SEC-AFS-32

Repair exchange for air flow sensor for SEC-ASD-531 / 532 incl. connection wire.



Air flow sensor for SEC-ASD-535

SEC-AFS-35

Repair exchange for air flow sensor for SEC-ASD-535 incl. connection wire.

Technical data

Dimensions (H x W x D): 15 x 14 x 115 mm



Aspirating fan unit for SEC-ASD-531 and SEC-ASD-532

SEC-AFU-32

Repair exchange for the aspirating fan unit complete for SEC-ASD-531 / 532.



Aspirating fan unit for SEC-ASD-535

SEC-AFU-35

Repair exchange for the aspirating fan unit complete for SEC-ASD-535.

Technical data

Dimensions (H x W x D): 138 x 185 x 58 mm



Rotary Snap Lock for SEC-ASD-531/532/535

SEC-RSL-35

Repair exchange for the SEC-ASD-531/532/535 housing.

Technical data

Material: ABS / steel

Packaging unit: 4 pieces



Insect protection screen for SEC-ASD-531/532/535

SEC-IPS-35

Insect protection screen for the SEC-ASD-531/532/535 housing.

Technical data

Material: steel

Packaging unit: 2 pieces

Sydney

Block Y, Unit 1, 391 Park Road, REGENTS PARK NSW 2143
Mail: PO Box 508 GYMEA NSW 2227
Phone: 1300 INCITE (1300 462 483) | 02 9644 7144
Fax: 02 9644 7255
Email: sales@incitefire.com.au
Technical support: support@incitefire.com.au

Melbourne

Address: Unit 120, 45 Gilby Road, MT WAVERLEY VIC 3149
Phone: 03 9544 2211
Fax: 03 9544 2212
Email: salesvic@incitefire.com.au

Brisbane

Address: 25 Jeays Street, BOWEN HILLS QLD 4006
Phone: 07 3252 5366
Fax: 07 3252 4099
Email: salesqld@incitefire.com.au

Perth

Address: Unit 2, 48 Irvine Drive, MALAGA WA 6090
Phone: 08 9349 2972
Email: saleswa@incitefire.com.au